



# COURSE BROCHURE

NEBDN NATIONAL DIPLOMA  
IN DENTAL NURSING



NEBDN Registered Dental Nursing Qualification Provider



# WELCOME TO EVEREST EDUCATION

Thank you for considering Everest Education for your Dental Nursing Training and Qualification. We are a NEBDN-approved course provider (National Examining Board for Dental Nurses). For anyone interested in becoming a qualified dental nurse in the United Kingdom, we offer the NEBDN Level 3 Diploma in Dental Nursing.

Find out more about this course on our website:

<https://theeversteducation.co.uk/diploma-in-dental-nursing/>

NEBDN website:

<https://www.nebdn.org/qualifications/diploma-in-dental-nursing/>

**Management Team**

Everest Education Ltd



# **MEENA GURUNG**

Director | Qualified Dental Professional

**EVEREST EDUCATION LIMITED**

**Fulfilling The  
Promise of Quality  
Dental Education For All.**

# CAMPUS CENTRES

## BASINGSTOKE

### HAMPSHIRE

Chute House  
Church Street  
Basingstoke  
England RG21 7QT  
United Kingdom

## FARNBOROUGH

### HAMPSHIRE

Wavell Campus Leisure  
Lynchford Road  
Farnborough  
England GU14 6BH  
United Kingdom

## FELTHAM

### WEST LONDON

Tudor Park Sports & Leisure  
Browell's Lane  
Feltham  
England TW13 7EF  
United Kingdom

# COURSE MODULES

Topics will be covered appropriately to meet the needs of the students with the use of different teaching and assessment methods; these may include Power Point Presentations, practical hands on sessions, group work, presentations, periodic tests and mock examinations.

- PROFESSIONALISM AND THE ROLE OF THE DENTAL NURSE
- HEALTH & SAFETY AND INFECTION CONTROL IN THE WORKPLACE
- LEGAL AND ETHICAL ISSUES IN THE PROVISION OF DENTAL CARE
- EMERGENCIES IN THE CLINICAL ENVIRONMENT
- ANATOMICAL STRUCTURES AND SYSTEMS RELATIVE TO DENTAL CAR
- ORAL DISEASE AND PATHOLOGY
- PATIENT CARE AND MANAGEMENT
- ASSESSING PATIENTS' ORAL HEALTH NEEDS AND TREATMENT PLANNING
- ORAL HEALTH PROMOTION AND PREVENTIVE DENTISTRY
- RADIOGRAPHY
- ENDODONTICS
- RESTORATIVE DENTISTRY
- EXTRACTIONS AND MINOR ORAL SURGERY
- ORTHODONTIC PROCEDURES
- DENTAL DRUGS, MATERIALS, INSTRUMENTS AND EQUIPMENT
- PAIN AND ANXIETY CONTROL IN DENTISTRY
- CHILDREN PROTECTION



## 12 Months

- Face-to-face (Weekly 2 hour) or,
- Online classes (Weekly 2 hour class)



## £2000

- All up-front (£1800 after £200 discount)
- Monthly basis



## Assessment

- Regular theory class
- Workplace assessment - (RoE)
- Examination - Written & OSCE

# COURSE INFO



## MONTHLY FEE PLAN

- Initial deposit: £500
- Remaining fee (£250x6): £1500

# COURSE OBJECTIVES

- For individual students to achieve a recognisable qualification in Dental Nursing.
- Allow individuals to apply for registration with the GDC.
- Develop essential skills such as communication and teamwork.
- Progress on to further Post Registration qualifications.
- Provide a fundamental qualification to base further education and training.
- Be able to work well in a team
- Have good organisation skills to manage the administrative aspect of the job.

# EXAMINATION

## Part 1 - Written Examination

Written examination will be held online. Students will require reliable IT equipment and an internet connection for the examination.

The first part consists of a written paper containing a mixture of Single Best Answer questions in the form of Multiple-Choice Questions (MCQs) and Extended Matching Questions (EMQs). Students will be given 2 hours to complete 60 Multiple Choice Questions and 40 Extended Matching Questions. The first part will be held in November and April and the successful candidates in this part will be automatically entered for the OSCE Examination (practical) which is to take place on January/ June; details about the OSCE examination will be communicated to the students.

## Part 2 - OSCE Examination

Once the written examination has been passed the student can enter the practical part of the exam, it will consist of a number of OSCEs or **Objective Structured Clinical Examinations**. An OSCE is a multi-station examination in which candidates spend a fixed period of time at each station before moving on to the next. Stations may be set up in several different rooms. They require candidates to undertake a task, such as mixing impression material, setting out an instrument tray, or giving advice or an explanation to a real or simulated patient.

The OSCE examination is held at the end of January and June. During the COVID-19 pandemic the NEBDN have moved the OSCE exam online and it differs slightly to the above structure.

**The OSCE examination will take place over two assessments.**

The **first exam** will last 40 minutes and consist of four scenario-based stations. Students will be required to describe verbally the steps they would take to complete a procedure or give patient advice via Zoom.

The **second exam** is an online workbook which consists of seven stations. Students will be given a maximum of 1 hour to complete the workbook.





# ENTRY REQUIREMENTS

- Sufficiently fluent in written and spoken English
- Must be residing in the United Kingdom
- Valid work permit
- Must be at least 18 years old
- Must be able to work in dental practice

**Get detailed information from:**

Admission Team

[courses@theeverstededucation.co.uk](mailto:courses@theeverstededucation.co.uk)

+447379736856

# HOW TO APPLY?

Submit by email or by post

## Required Documents

- Application form •
- CV •
- Proof of address •
- Passport/Licence •

## **Admission Team**

Admission Team

[courses@theeverstededucation.co.uk](mailto:courses@theeverstededucation.co.uk)

+447379736856



# SUCCESS STORIES

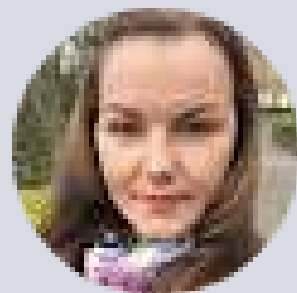
Be the part of our success stories.

## Excellent Pass Rate

## Get Placement Faster

Candidates at Everest Education are more likely to get the placement during the 1st month of enrolment date with the help of dedicated placement support offered by the college.

### Student's Voice



### **ANASTASIA MANDALAC** **STUDENT DENTAL NURSE - EVEREST EDUCATION**

I would highly recommend Everest Education to anyone who's looking to become a dental nurse. Their lessons times are so convenient for students who are working full time and the placement support has helped me so much. My tutors Meena and Manisha were so supportive throughout, very organised and structured and very helpful.

Could not recommend them enough!!





## WEBSITE

[www.theeversteducation.co.uk](http://www.theeversteducation.co.uk)



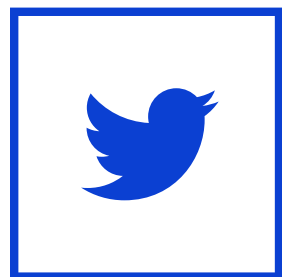
## FACEBOOK

<https://www.facebook.com/theeversteducation>



## INSTAGRAM

<https://www.instagram.com/theeversteducation/>



## TWITTER

<https://twitter.com/theeveedu>

